



## Do-It-Yourself Cooling Kits

### ADLER / BARBOUR SERIES

#### Performance, Efficiency and Quality ...

... all hallmarks of dependable marine refrigeration by the Adler / Barbour Series. The versatility provides for all-freezer or combination refrigerator/ freezer systems.

Your appreciation of 12/24 volt DC refrigeration on-board will be determined by its ability to develop and maintain freezing temperatures quickly without running your batteries down.

Adler / Barbour's popularity today has grown from its proven and extraordinary ability to perform efficiently in a wide variety of installations. Its uncompromised quality has become the standard by which other systems are measured.

Specifically designed to survive the rigors of harsh marine environment: heat and humidity, erratic or low voltage, continuous use. Unmatched in performance and efficiency. Designed and manufactured in the USA. Join the 50,000 owners who won't settle for less.

- Oversized air condensers.
- Accommodates large refrigerators — up to 15 cubic feet (424 liters) with 3" (76mm) of polyurethane.
- Danfoss BD50F compressor — resulting in 25% more cooling performance (as compared to the BD35F).
- Stainless-steel construction.
- Shrouded forced air condensers.
- Modular phone-jack connection for thermostat.
- Quick connect couplings.
- High CFM fan.
- Built-in trouble-shooting diagnostics.
- Can be installed up to 15' (457cm) from evaporator.
- Precharged and ready to install!



## Simple Installation

### 1. Choose a cooling unit.

The **CU-100** for general boating  
The **CU-200** for tropical water boating

### 2. Select an evaporator.

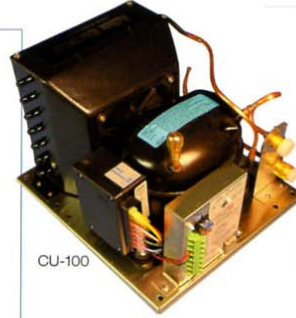
Consider the size and orientation.  
Any Adler / Barbour evaporator can  
be installed up to 15' (457cm) from  
the cooling unit.

### 3. Easy installation.

Needed tools: Electric drill with assorted  
small bits, stubby Phillips screwdriver,  
hole saw 1.5" in diameter, open end 5/8"  
wrench, open end 13/16" wrench,  
and electrical wire.

#### ADLER / BARBOUR COOLING UNITS

Application:	General Boating: <b>CU-100, CU-103</b> Tropical Water Boating: <b>CU-200</b>
Voltage:	<b>CU-100, CU-200</b> 12 volts DC <b>CU-103</b> , 12/24 volts DC
BTU Rating:	650 / hr. maximum @ +25F evaporator
Compressor:	Danfoss BD50F
Refrigerant:	Environmentally-safe R134a
Material:	Stainless-steel
Dimensions:	11.1"D x 10"W x 7.5"H (281mm x 254mm x 190mm)
Net Weight:	18 lbs. / 8.64 kg.



CU-100



CU-200

#### ADLER / BARBOUR EVAPORATORS

Application:	Medium sized refrigerator to small freezer, closed evaporator: <b>VD-150</b>
Orientation:	Top loading
Cooling Capacity:	9 cubic foot (254 liters) refrigerator
Dimensions:	10.5"L x 11"H x 6"D 266mm x 279mm x 152mm)
Net Weight:	12 lbs. / 5.44 kg.



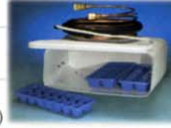
Application:	Large sized refrigerator to medium freezer, closed evaporator: <b>VD-152</b>
Orientation:	Top loading
Cooling Capacity:	15 cubic foot (424 liters) refrigerator
Dimensions:	15"L x 12"H x 6"D 381mm x 304mm x 152mm)
Net Weight:	13 lbs. / 5.89 kg.



Application:	Medium sized refrigerator to small freezer, closed evaporator with door: <b>VD-151</b>
Orientation:	Front loading
Cooling Capacity:	9 cubic foot (254 liters) refrigerator
Dimensions:	10.75"L x 7"H x 11.25"D 273mm x 177mm x 285mm)
Net Weight:	10 lbs. / 4.53 kg.



Application:	Large sized refrigerator to medium freezer, closed evaporator with door: <b>VD-153</b>
Orientation:	Front loading
Cooling Capacity:	15 cubic foot (424 liters) refrigerator
Dimensions:	15.5"L x 7.5"H x 12"D 393mm x 190mm x 304mm)
Weight:	14 lbs. / 6.35 kg.



Application:	Medium to small sized freezer, power plate evaporator with holdover capabilities: <b>VD-160</b>
Cooling Capacity:	4 cubic foot (113 liters) freezer
Dimensions:	19"L x 11.25"H x 1.25"D 482mm x 285mm x 31mm)
Weight:	4 lbs. / 1.8 kg.

